

## **Building Your Recess Team**

Congratulations and a huge appreciation clap to you for stepping up to enhance your recess climate! We applaud your energy and willingness to collaborate with your fellow staff to support students on the playground. At Playworks, we believe that every child should have access to safe, healthy play and we are so grateful to have champions like you advocating for this vision each and every day.

As part of the Playworks experience, we hope you find the partnership to be supportive to your school community. Beyond the activities we have scheduled, we hope you will utilize our Playworks team as a resource and support for your success on the playground. If you ever have questions, concerns, or are looking for ideas, your Playworks partners are more than happy to answer questions or troubleshoot challenges you may be facing.

Excited yet? We hope you are! We can't wait to work with you and continue to support you in your work as an integral part of the Recess Team. On the next few pages you can find some helpful resources to get you started.




Play on!

## Setting up your recess team

### What is a Recess Team?

The Recess Team is a group of dedicated adults who work together to lead and strengthen the implementation of recess every day.

We encourage you to identify and assign school staff to fulfill the roles defined below to launch and sustain safe and healthy play at your school. These roles may overlap and may be filled by one or more school staff members. Remember, it will be important to designate time for staff professional development and coaching!

<b>Recess Manager*</b> 	<b>Recess Coach (optional)</b> 	<b>Recess Team*</b> 
<p><b>RESPONSIBLE</b> for setting overall goals for recess program implementation, and leads the team in assessing and improving recess</p> <p><b>PROVIDES</b> ongoing support, observation, and management of the Recess Team throughout the school year</p> <p><b>AWARE</b> of the current status of recess via periodic visits to playground during recess and being present at all Recess Team meetings</p> <p><b>SERVES</b> as liaison between Recess Team and school leadership team</p>	<p><b>RESPONSIBLE</b> for collaborating with Recess Manager on recess goals and leads Recess Team in implementing the goals set</p> <p><b>MODELS</b> recess expectations and strategies, and demonstrates positive adult engagement</p> <p><b>LEADS</b> the way for impact through play by supporting staff and students during recess</p> <p><b>COMMUNICATES</b> daily with Recess Team and Junior Coaches to implement a high functioning recess</p> <p><b>SETS UP</b> and tears down games at recess</p>	<p><b>RESPONSIBLE</b> for collaborating with Recess Manager (and Recess Coach, if applicable) on recess goals and implementing set goals</p> <p><b>IMPLEMENTS</b> and co-leads recess on a daily basis</p> <p><b>MODELS</b> recess expectations and strategies, and demonstrates positive adult engagement</p> <p><b>SUPPORTS</b> recess by proactively managing and engaging with groups of students</p> <p><b>SETS UP</b> and tears down games at recess</p> <p><b>ATTENDS</b> regular planning meetings</p>

## \* Recommendations for success

**Recess Manager:** Identify someone who has capacity to effectively support, lead, and collaborate with the Recess Team; Ideally, a member of school leadership. (i.e: Principal, Assistant Principal, or Director)

- We find the more a school's leadership team directly participates in recess support and implementation, the better the outcomes for safe and healthy play.

**Recess Team:** Identify a diverse, dedicated and consistent team (i.e: school staff, para-professionals, volunteers, P.E. teacher, etc.).

- Oftentimes, schools with the greatest success implementing the concepts and strategies covered in our trainings have their P.E. teacher(s) fully engaged in the process. (i.e: by introducing new recess games during class to build student skills and knowledge, modeling group management strategies, and serving as strong advocates for the value of play, etc.)

**Recess Team meetings:** Establish consistent and collaborative meetings to provide your team with the time and space to evaluate recess, make progress towards goals, and discuss any barriers to further success. The frequency and duration of these team meetings is ultimately at the school's discretion, but we recommend meeting on a monthly basis at minimum.

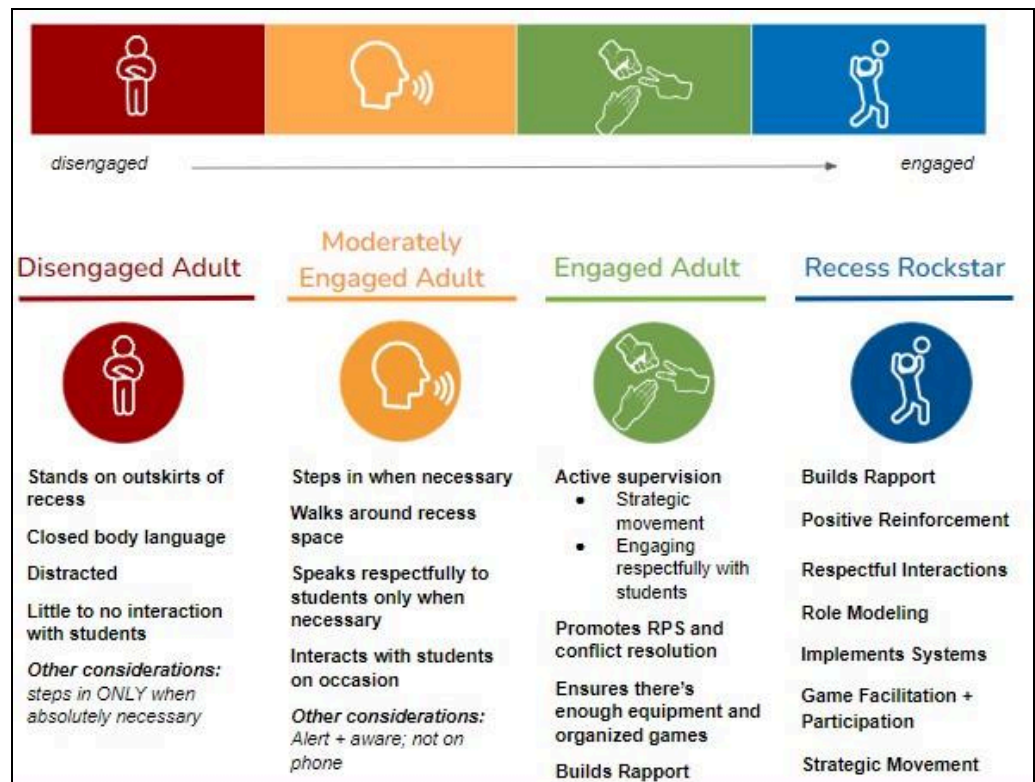
- Encourage adult engagement and approach your team meetings with intention, empathy, and collaboration.

## Sliding Scale of Engagement

Adults play a critical role in making recess safe and fun for every kid. By encouraging adult engagement at recess, adults help to create and sustain a culture of learning and fun on the playground. Let's talk about it!

Engagement can look different for different people at different times. The Sliding of Engagement allows adults to move through the stages of engagement in ways that work for them.

**How will you engage with students to support a positive play environment and recess experience for your students?**



## **Recess Team FAQ**

### **I'm on the Recess Team. Now what?!**

Now the fun begins! During our time together, we ask that you specifically take great notes on the planning that we do. You and your teammates will be each other's greatest resource for moving recess forward. We also highly recommend working with your Recess Manager and/or administrator to condense all of the planning into a manual, or creating some type of tangible, visible guide for current and future Recess Team members to refer to.

### **Awesome. I'll take stellar notes, I'm planning to make a tangible resource for our team, and I've got a solid grasp on the games. How do I take all this planning and put it into action?**

Great question. The implementation will occur in stages. And, the whole Recess Team will be part of making sure recess is successful and sustainable. Create a checklist of things you can plan to develop and grow on a month-to-month basis. And remember, every school is different! Some schools roll out the entire plan in a month, while other schools take six months or even a full school year.

### **What's a Consultation Visit (CV)? Do we need to prepare for it?**

Some schools will be participating in Consultation Visits (CV). During the CV, Playworks staff will meet with your Recess Team to track your progress, reflect on recess challenges/successes, and set some next steps to take your recess to the next level!

### **If I need more support or resources, can I get in touch with Playworks?**

Of course! We hope you will utilize Playworks' staff and website as ongoing resources for you and your team. We've listed a few resources below to help get you started!